

ControlReady

Live-Assist, Walk-Away, Voice Track, Overlap, Reconcile, Auto-Fill, Auto-Sync, It's All There Live Assist or Walk Away - ControlReady gives you the best of both worlds. Run satellite music and news/talk stations. Run music-on-hard-drive formats with while-you-listen voice tracking. Interface with traffic/music schedulers, time shift, time warp, switch and route audio. Control sat receivers, even run radio network uplinks. Retrieve and play files from Content Depot and FTP servers and more.

Don't be fooled by companies that charge lower prices, but don't include setup, training, warranty and support for your investment. If you add up those extra charges - you'll find we can save you big \$\$\$.

## SERVICE / WARRANTY

Systems include:

1 year hardware warranty & 1 year unlimited 800 phone plus email help desk support  
M-F 9a-6p

Includes free software upgrades for 1 year. Optional 24/7 Support available also.



USED BY THOUSANDS OF STATIONS &amp; PROFESSIONALS WORLDWIDE

## BUY A COMPLETE SYSTEM

**ControlReady works for Satellite Music, Satellite News/Talk, and Music on Hard-drive or any combination of the three depending on the format of the station. Unlike other companies, we don't break our product into dozens of options, or a handful of different programs you have to buy to get all the functionality you want. Starting at \$6,995.**

- Built-in Music Scheduler with Artist Separation controls INCLUDED
- Single button toggle between walk-away and live-assist mode
- Eliminates the need to maintain a separate music scheduling system
- Instant replay screens customizable for each show host
- RDS title and artist support
- Record multiple shows at the same time
- Simple while-you-listen voice tracking
- Traffic & music schedule merging
- Fully managed as-run confirmation logs
- Full support for Broadcast Tools and compatible switchers and GPI logic
- Directly flip Starguide and Unity Receiver channels via RS-232
- Auto fill breaks
- \*.WAV compatible - no need to convert files for loading
- Power loss protection - resumes operation if restart ever occurs
- Buy as software only or order a turnkey system complete
- Supports interfaces including Broadcast Tools, Logitek, Wheatstone and others
- Music on Hard-Drive system can include pre-loaded TM Century Music
- Supports Virtual audio drivers including Axia, Wheatstone, and PR&E VistaMax
- Live assist provides remote triggering from console
- Edit logs in real time without ever stopping the system
- Music and breaks show accurate start and end times on every event
- Simultaneous play/record & overlapping
- Start programs while they are STILL recording
- Imports traffic and music schedules from many 3rd party systems
- Integrated traffic reconciliation warnings before mistakes air
- Time sync to Internet servers or satellite closures
- Supports remote DTMF phone control for ball games or remote broadcasts
- Content Depot compatible
- Rotation management includes daypart and hour by hour exclusions
- Free cut labeller you can give ALL your friends and providers
- Auto-syncs files across LAN from production or FTP servers
- Supports Inovonics, Audemat, The Radio Experience and a wide range of other RDS encoders/HD Radio Data environments
- Supports Stream Provider connections including Live365, Abacast, Ando, SurferNETWORK

# WHAT YOU WERE REALLY WANTING TO SEE...

All WireReady products are Windows 7 compatible beginning with Version 9.0 and later. We recommend Windows 7 Professional. All WireReady versions will also remain compatible for Windows XP Pro Service Pak 3 32-bit edition. With all of our software solutions, WireReady provides 24/7 800 help desk support, live remote access assistance, and training services. We can provide turnkey industrial rackmount RAID workstation and server solutions, on-site installation and training services. We are an authorized dealer for many products including Broadcast Tools switchers, a wide range of audio cards and a variety of PC peripherals. We also provide direct support for customer supplied hardware.

WireReady can run stand-alone on one or more machines or run on a LAN with any file server or NAS. Software is client-based and Windows hardware/software compatible.

## SCREENS AND DETAILS

### AUTOMATION DECKS



Nothing beats the ability to create stand-alone playlists to run your satellite, music on hard-drive or show schedules. Our decks are as powerful as true script programming sequencers, with customizable columns and fonts and a range of information levels to make it look engineering or DJ friendly. A deck/playlist is 2400 lines. Run up to 8 simultaneous playlists at a time for playback, recording, liners and other activities. Playlists can be run from the automate decks or from the DJ-friendly live-assist screen.

### LIVE ASSIST



This virtual live assist console application sits on top of our highly regarded log-based automation application. You can now toggle between the raw log and the live-assist view. Every deck/button on this screen is contact closure, RS-232 and TCP/IP remotable too.

### VOICE TRACKING



We have one of the simplest voice trackers in the industry. Hit 1 to roll the end of the first song, Hit 2 to start recording your track, Hit 3 to start the beginning of the track which follows, Hit 4 to stop. Hit F3 to audition it back. Repeat until you like what you have. No complicated displays. Rely on the existing intro and outro settings saved in the song metadata to let the system automatically place your voice where it needs to (dry record) or you can configure the screen to let you be in control. Live timers act as a guide suggesting when to hit the 1, 2 and 3 keys.

### 10 DECK ONAIR



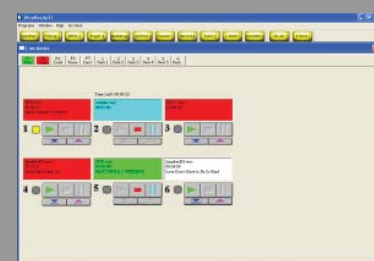
A classic old-school screen that lets an operator have commercials or music set up in the decks on the left and hot buttons ready-to-fire on the right (mouse or keyboard). Define your own hot keys/numbers and mouse click combos to control how you play, stop, load, queue and more. Drag and drop is supported. This screen supports two audio channels, one for the left decks and one for the hot buttons.

### TRIPLEDECK "PLAYER"



Another old-school playout screen that provides three drag and drop decks to hot-load and play audio files. Check boxes to automatically segue from deck to deck and even auto-overlap using cross points stored in the audio file metadata. Hot buttons on the right keep legal ids or liners handy. Drag and drop quick playlists to do simple automated sequences or drag and drop individual files into any deck on the fly.

### 6 DECK BEGINNER



Have a challenged operator or someone with super simple needs? This started as a training screen but it turned out to be popular with everyone. This screen's virtue is the simple limited nature of it: 6 virtual cart decks. The only thing it lets you do is load files into any of the 6 decks and play them one at a time.