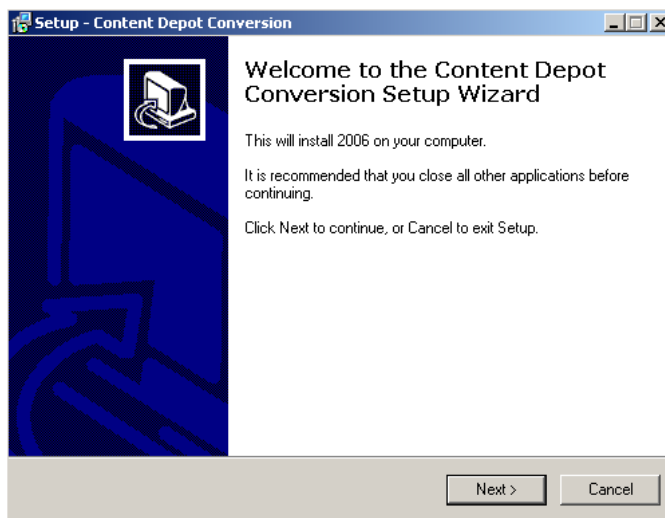


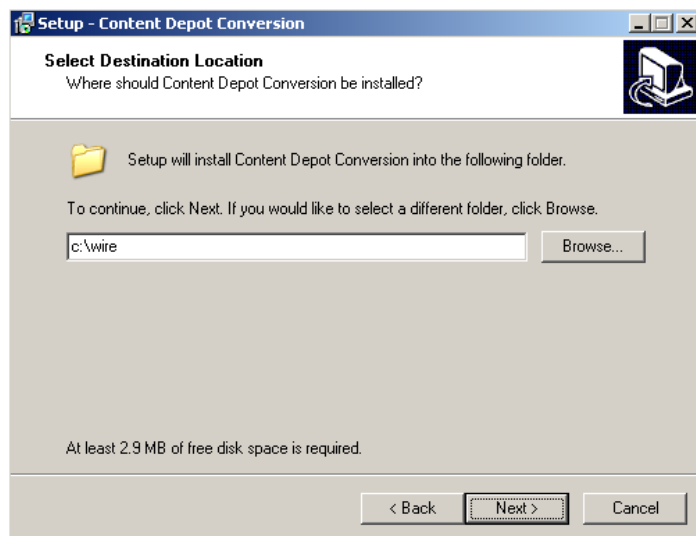
MPEGReady for Content Depot Setup

Download the MPEGReady for Content Depot Setup Program from the Downloads/Upgrades and Version History page at www.wireready.com. This setup program can be run to do the initial install of the program or to modify some of the settings after installation.

Run the **cd-setup.exe**.

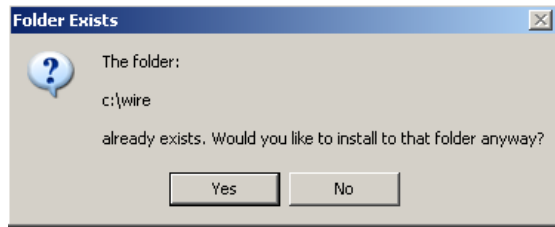


Click **Next** and the following window opens:



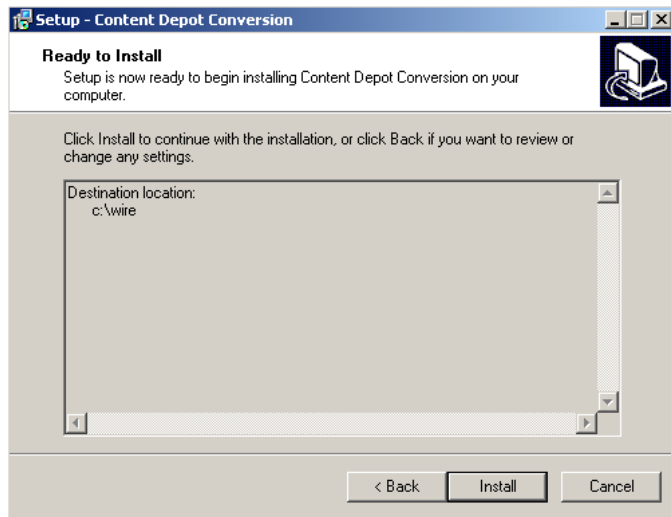
Enter the drive and path to install the files to. This will be the location that DBCapture runs from. Click **Next**.

If the folder already exists, the following window will open. Click **Yes** to install to that folder. If you are already running a version of DBCapture from this folder for moving files or web publishing, click **No** to choose different folder to install MPEGReady to.

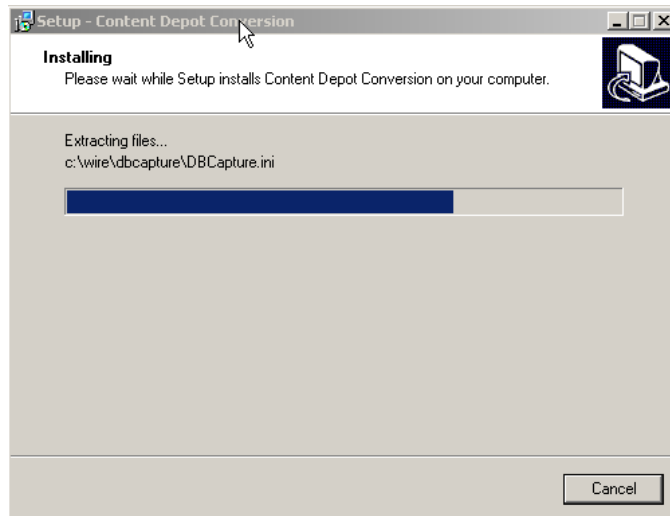


a

This window is to confirm the installation location of the files. Click **Install** to continue the install, or click **Back** to make changes to the location of the files.

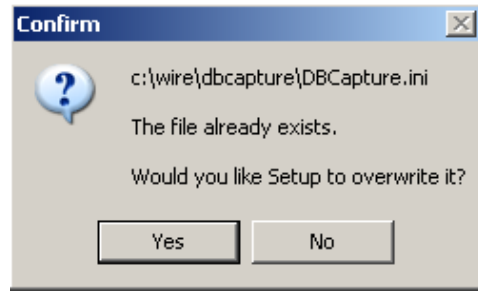


Click **Next**, and the Installing window will show the progress of the file extraction.

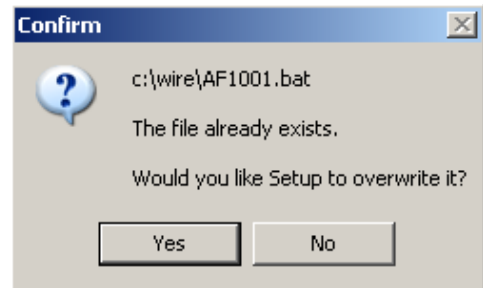


If the DBCapture.ini file already exists in the folder, it will give the following message.

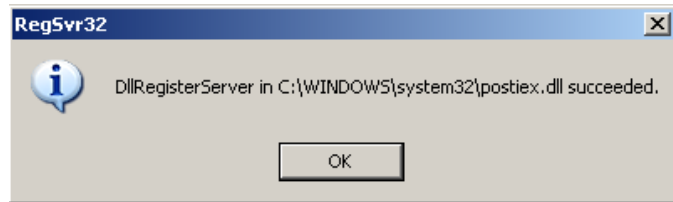
If you have been running DBCapture from this folder, choose **No** to not overwrite the file, and edit the DBCapture.ini file manually later. If you choose **Yes**, it will overwrite the existing file with the one included with the setup program, which is configured for Content Depot.



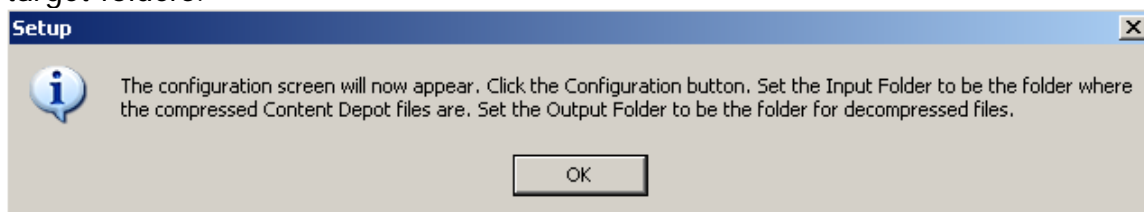
If you are updating to the new LAME files, and the audio conversion batch file exists, you will receive the following message. If you have manually edited the batch file previously, choose **No** to keep your existing batch file.



Once the files are extracted, a confirmation window will open to show that the Postiex.dll file was registered successfully. This file is needed if you will be using WRCheck to email failure alerts.

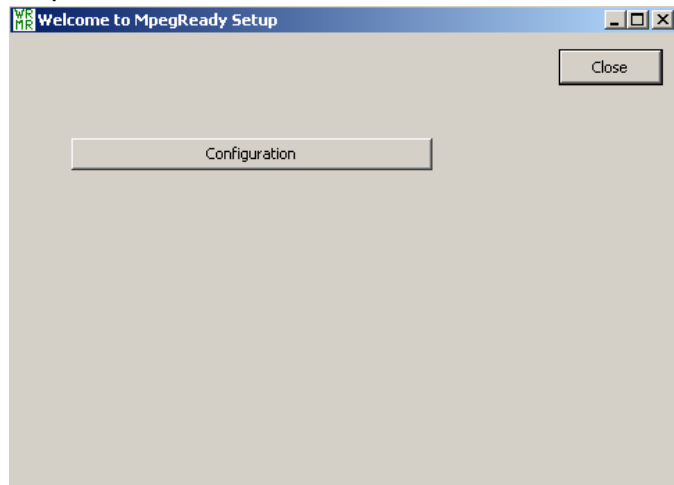


Click **OK**. The following window will open to let you know how to set up the source and target folders.



Click **OK** to open the Welcome to MPEGReady Setup window.

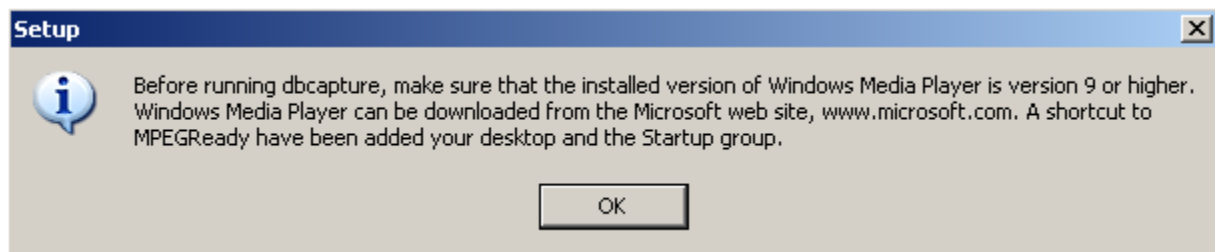
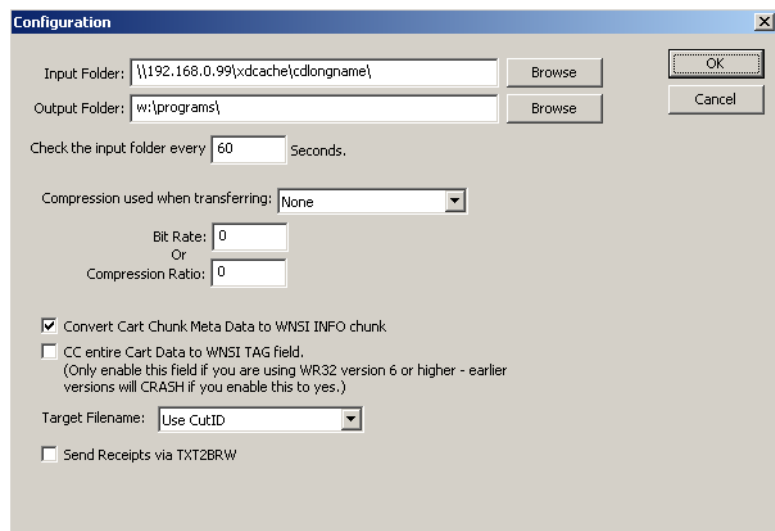
Click the **Configuration** button to set up the folders.



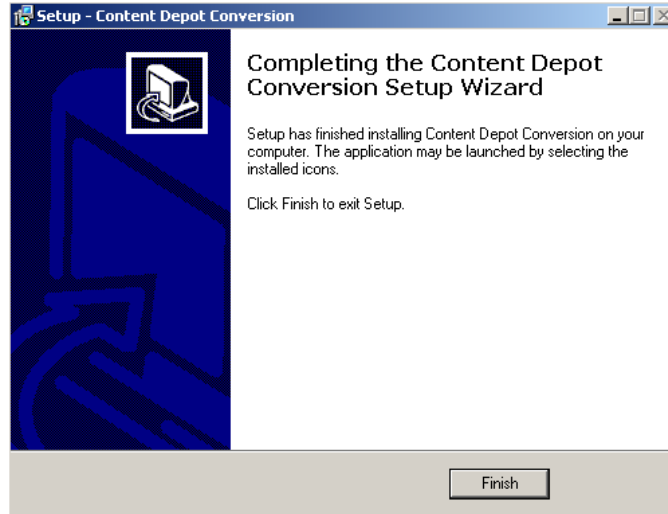
In the Configuration window, edit the Input Folder line to have the correct IP address for the Content Depot box. Edit the Output Folder line to reflect the location of the files after conversion.

The other lines can be left at the default settings.

Click **OK** when finished editing the Configuration window. The Setup window lets you know to install Windows Media Player. Also shortcuts to the program are installed to the desktop and the Startup Group. Click **OK**.



Click the **Finish** button to exit the Setup program.



A shortcut to MPEGReady is created on the desktop. MPEGReady should run 24/7 to pick up files as they arrive in the Content Depot box. It can run minimized if this machine is being used for something else. A shortcut to MPEGReady is also added to the startup group to have the program run upon a reboot of the computer.