

WRDelay

WRDelay is a program that allows tasks time to load on windows boot before continuing on to the next task. In testing, we found that dos batch files *.BAT would often call the next line in the batch file before the current program terminated. WRDelay.exe can be used when the W:\ drive is substituted during startup, to allow time for Windows to create the drive before launching any executables.

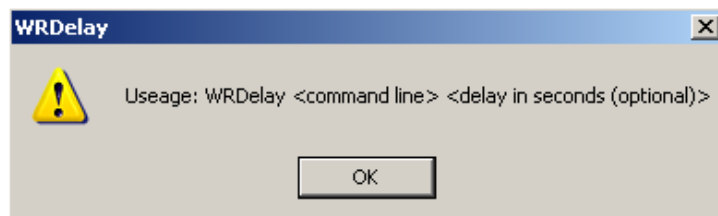
The format of the command is:

WRDelay <command line> <delay in seconds (optional)>

Example: *WRDelay wr 5* would cause the WRDelay to wait five seconds before executing wr

If the second parameter (delay in seconds) is blank, then the WRDelay.ini file will be used. The WRDelay.ini file is located in the folder WRDelay.exe is run from. If the WRDelay.ini file is not present, or the 'Delay=' key is blank, the default of 30 seconds will be used. The WRDelay.ini file will be created/updated if it is not present.

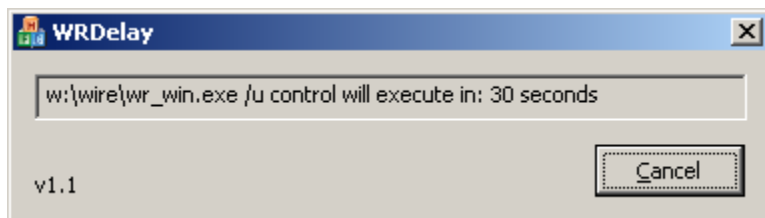
If no command line parameters are used, the program will generate an error that displays the correct format of the command, and exit.



Note: if command line parameters in addition to an executable are to be used, the command line must be enclosed in quotes.

Example: *WRDelay "w:\wire\wr_win.exe /u control"*

When WRDelay is used, a window is launched that displays the command line and counts down the time until the application is started. Once it launches the text that is passed to it on the



command line, WRDelay terminates and will close automatically.

Click the Cancel button to exit WRDelay before the command executes, if the program should not run.