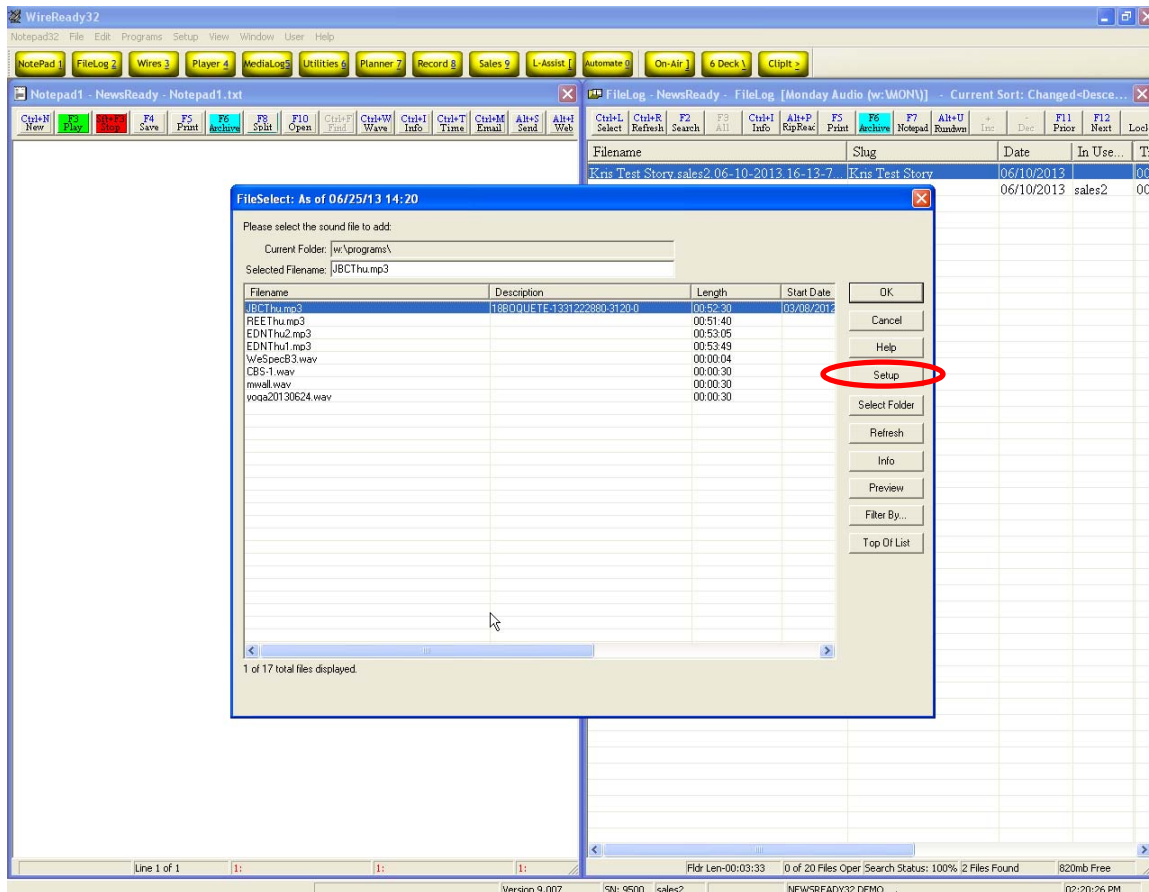


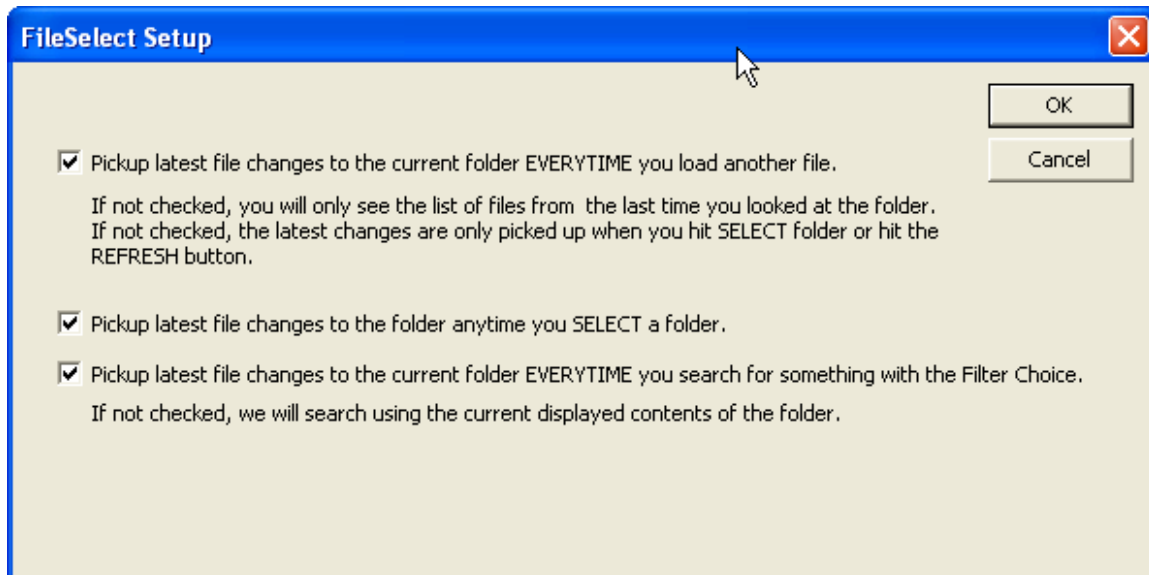
FileSelect Setup Button

A new button has been added to the FileSelect window (launches when adding new audio files in the Automate, Live Assist2, Onair and Notepad screens). The new Setup Button allows users to enable or disable refreshing of the folder in the FileSelect window.

Some customers will want any new file to be displayed anytime they access the FileSelect window. Others will not want to wait for the refresh of the folder to occur, especially in situations where there are more than a few thousand files in a folder.

There are 3 statements that can be checked or unchecked for more control over the speed of drawing of the list of files in any given folder. If a user wants more speed, he/she will want to disable the statements, opting to do a manual refresh only when needed and at convenient times.





Here are further explanations of the settings:

- 1. Pickup latest file changes from the current folder EVERYTIME you load another file.**
 - a. If not checked, you will only see the list of files from the last time you looked at the folder.\
 - b. If not checked, the latest changes are only picked up when you hit SELECT folder or hit the REFRESH button.
- 2. Pickup latest file changes to the folder anytime you SELECT a folder.**
- 3. Pickup latest file changes to the current folder EVERYTIME you search for something with the Filter Choice.**
 - a. If not checked, we will search using the current displayed contents of the folder.

NOTE: Any changes to the check boxes will be there when the FileSelect window is opened from any of the screens within the program (Automate, Live Assist2, Onair, Notepad).